

Response to Request for Information

Reference FOI 000754
Date 09 January 2017

Contract of Supply for Agency Staff – Children’s and Adult Services

Request:

I would like to establish some information regarding contract of supply for agency staff in both children’s and adult’s services and we would be grateful if you could answer the following questions for us:

1. Could you please provide an organisation structure chart for children and young people’s services including the names of all teams and team managers and their contact details?

[See attached.](#)

[The City of Wolverhampton only discloses individual names in respect of the top tiers of its management structures. In order to advise and assist you, much of the information falls under Section 21 exemption as the information is available to you by other ‘means’. See link below:](#)

<http://www.wolverhampton.gov.uk/CHttpHandler.ashx?id=9826&p=0>

[In respect of the lower staff tiers, I confirm that we hold the requested information in respect of all the team members for each area. However, we do not routinely publish staff positions held or the names of other staff members as we feel this constitutes personal information and therefore is exempt under Section 40\(2\), Personal Information, the disclosure of which would breach the first data protection principle outlined in Schedule 1 of the Data Protection Act 1998.](#)

[This exemption applies because we consider that disclosure of this information without the consent of the individuals concerned would not be fair or lawful and is judged to be to the wider world and they would not reasonably expect that their details would be disclosed in this way and consider individuals have a reasonable expectation of privacy.](#)

[This is an absolute exemption and therefore there is no requirement for us to consider the public interest.](#)

2. Could you please provide an organisation structure chart for adults services including the names of all teams and team managers and their contact details? [As above.](#)
3. How many temporary social work staff did the authority have deployed across

Children's Services in November 2016? During November 2016, 33.6 FTE Agency social workers were deployed across the City of Wolverhampton Council's Children's Services.

4. How many temporary social work staff did the authority have deployed across Adults Services in November 2016? There were 31 Social Workers employed in November 2016.
5. How do you engage locum social workers in the council (managed service, PSL, etc?) and who in the council is responsible for this? The process to engage Locum Social Workers is that the recruiting manager completes a form to recruit from agency. This goes through a process to ensure there is a need and budget, this then gets signed off by the Service Director. The recruiting manager gets this approval and then approaches recruitment agency YOO Recruit who have a second-tier supplier Capita; they send the recruiting manager CVs for candidates. The recruiting manager follows the process and shortlists and interviews. Capita do all the necessary checks and any processes that need to be done before appointment. Recruiting managers are responsible for adhering to the Councils recruitment processes.
6. Can you tell me the amount of £ agency spend there has been outside of the agreed vendor contract you have procured for staff, Jan 2016 till December?

Children

£ 160,639.70	Child Protection Total
£ 493.15	Children With Disabilities Total
£ 6,482.18	Early Intervention Total
£ 13,950.97	Early Years Total
£ 96,050.00	Looked After Children Total
£ 1,054.01	Social Inclusion & Play Service Total
£ 38,306.96	Service Director Children & Young People Total
£ 104,052.22	Strategic Director People

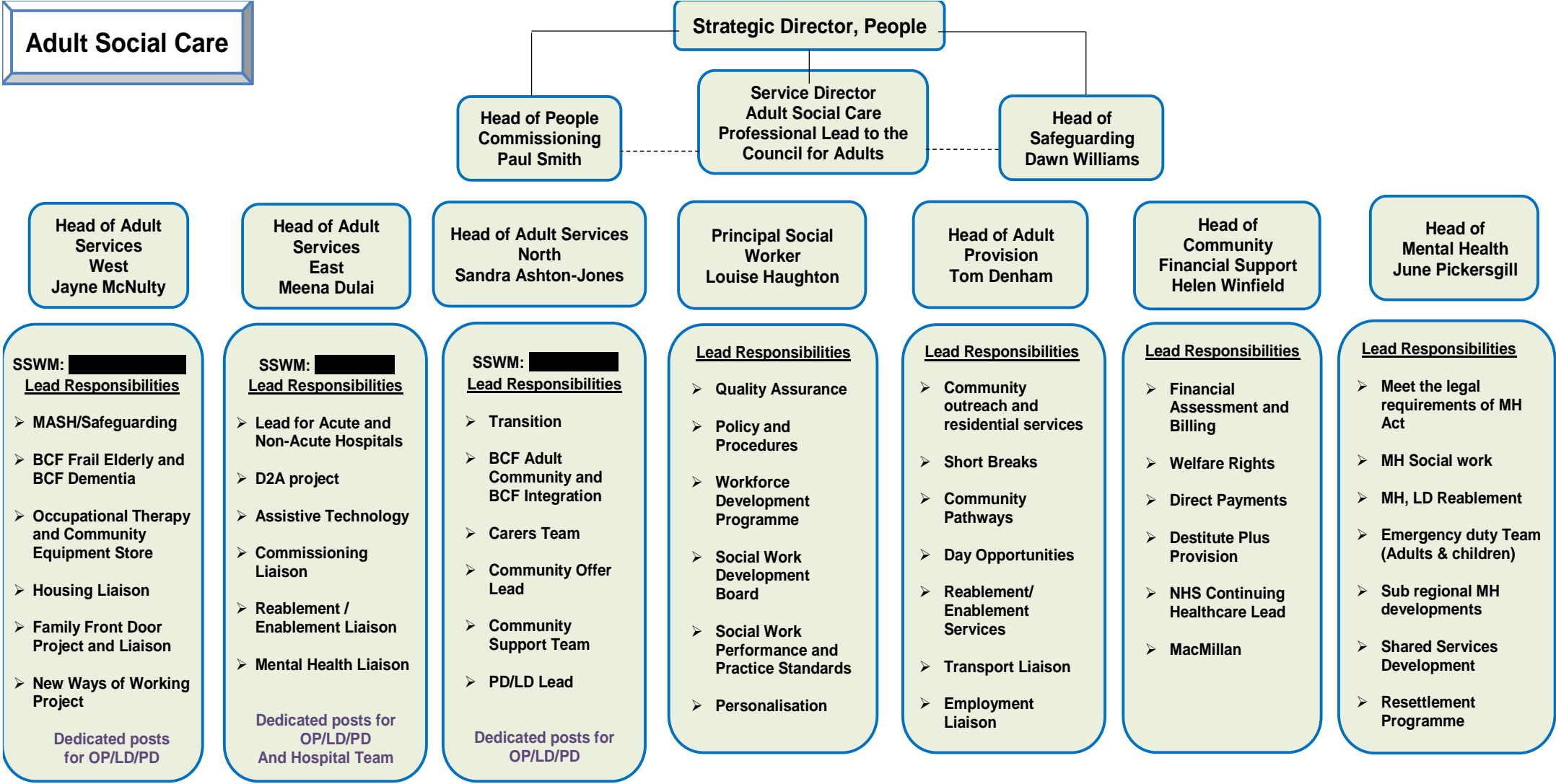
Adults

£ 46,276.76	Independent Living Service Total
£ 51,830.23	Older People Assessment & Care Management Total
£ 21,867.98	Commissioning Total
£ 104,052.22	Strategic Director People

This is Off Contract spend for the period Jan-Dec16.

7. Can you tell me the departments within Social Services that have had off contract agency spend, Jan 2016 till December? As above.
8. In the past 12 months, have you procured an employment agency to engage permanent social work staff? All recruitment of permanent staff is through the councils Recruitment Policy and processes and not through employment agency.
9. If so, who in the council is responsible for this? N/A

Adult Social Care



Head of Adult Services West
Jayne McNulty

Head of Adult Services East
Meena Dulai

Head of Adult Services North
Sandra Ashton-Jones

Principal Social Worker
Louise Haughton

Head of Adult Provision
Tom Denham

Head of Community Financial Support
Helen Winfield

Head of Mental Health
June Pickersgill

- SSWM: [REDACTED]**
Lead Responsibilities
- MASH/Safeguarding
 - BCF Frail Elderly and BCF Dementia
 - Occupational Therapy and Community Equipment Store
 - Housing Liaison
 - Family Front Door Project and Liaison
 - New Ways of Working Project
- Dedicated posts for OP/LD/PD

- SSWM: [REDACTED]**
Lead Responsibilities
- Lead for Acute and Non-Acute Hospitals
 - D2A project
 - Assistive Technology
 - Commissioning Liaison
 - Reablement / Enablement Liaison
 - Mental Health Liaison
- Dedicated posts for OP/LD/PD And Hospital Team

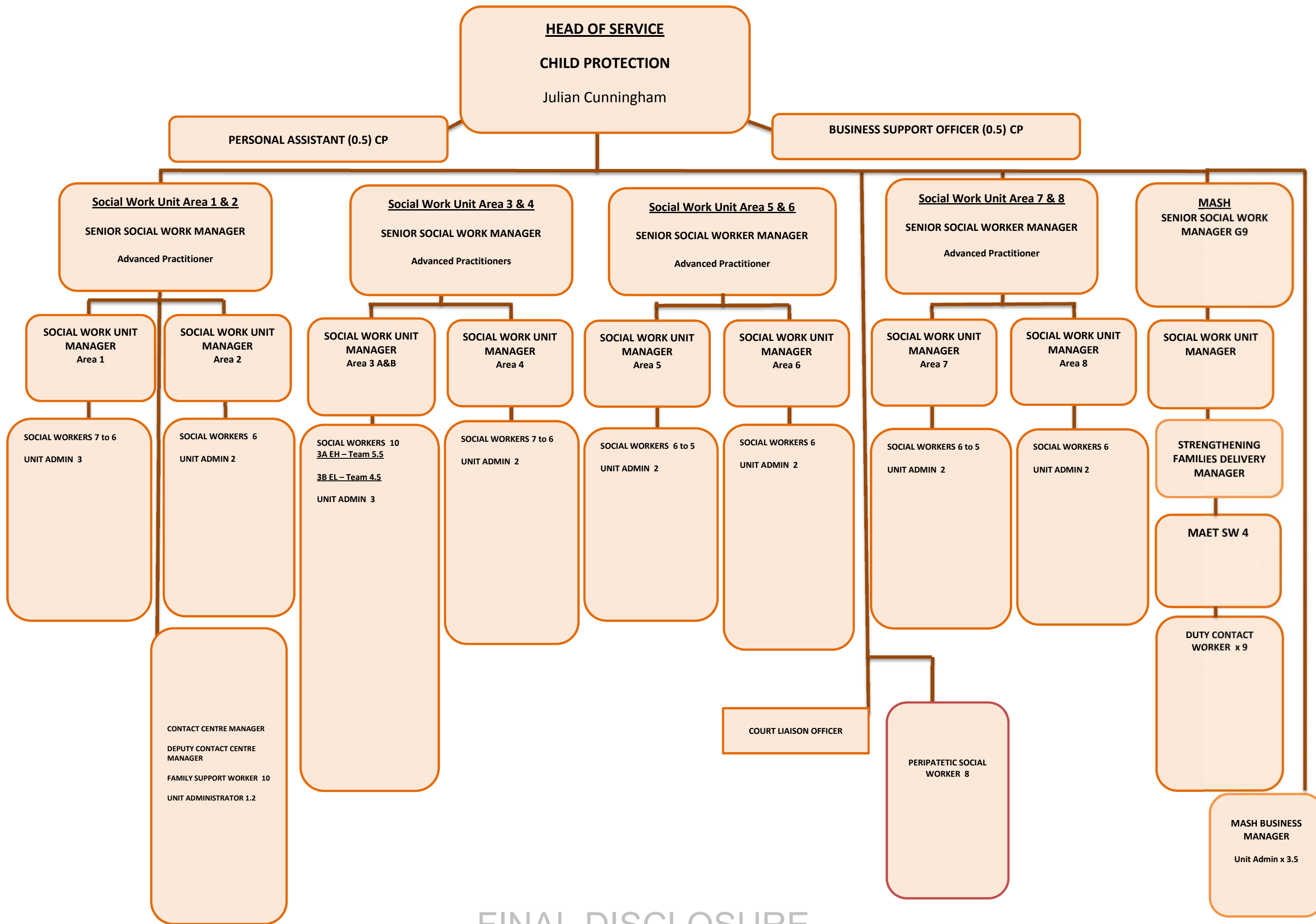
- SSWM: [REDACTED]**
Lead Responsibilities
- Transition
 - BCF Adult Community and BCF Integration
 - Carers Team
 - Community Offer Lead
 - Community Support Team
 - PD/LD Lead
- Dedicated posts for OP/LD/PD

- Lead Responsibilities
- Quality Assurance
 - Policy and Procedures
 - Workforce Development Programme
 - Social Work Development Board
 - Social Work Performance and Practice Standards
 - Personalisation

- Lead Responsibilities
- Community outreach and residential services
 - Short Breaks
 - Community Pathways
 - Day Opportunities
 - Reablement/ Enablement Services
 - Transport Liaison
 - Employment Liaison

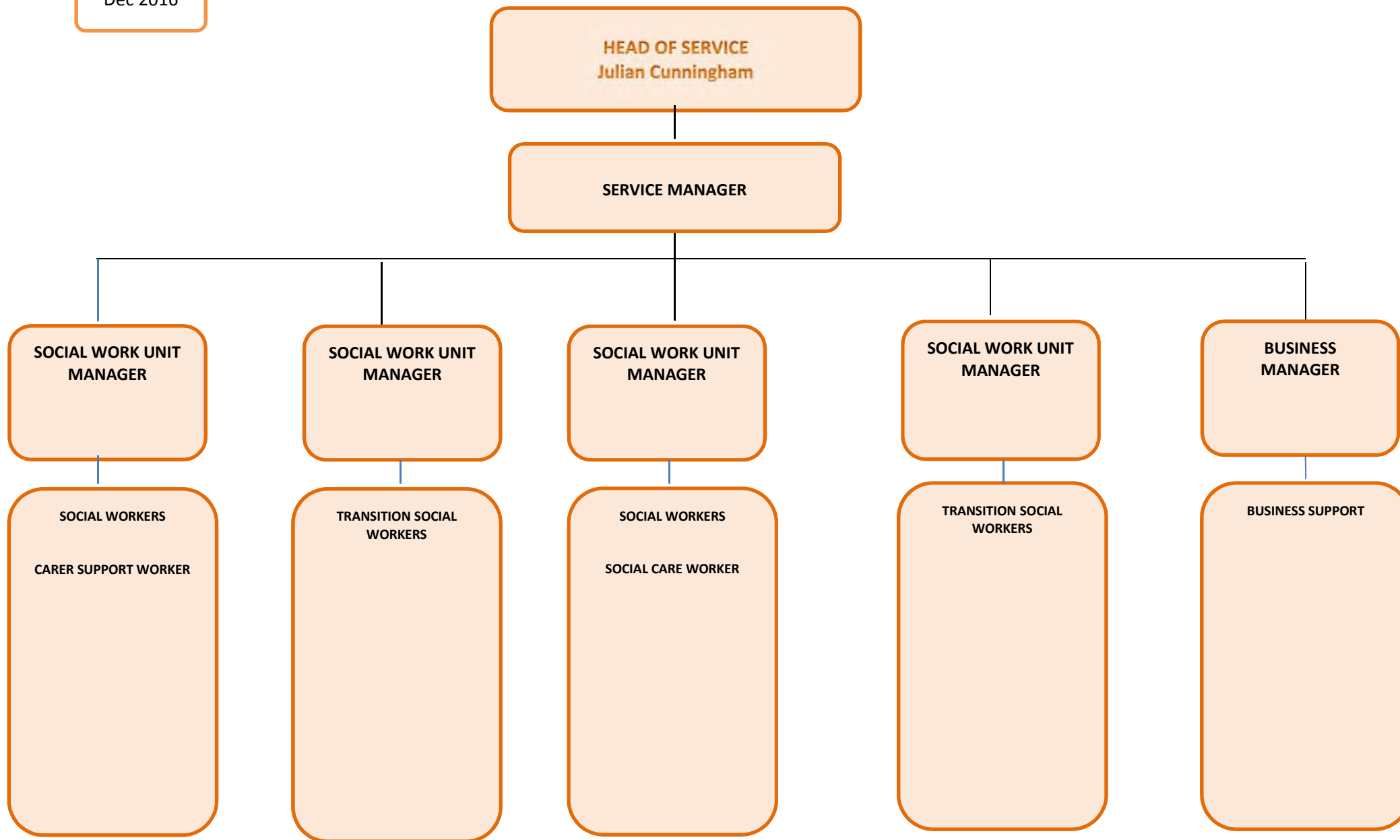
- Lead Responsibilities
- Financial Assessment and Billing
 - Welfare Rights
 - Direct Payments
 - Destitute Plus Provision
 - NHS Continuing Healthcare Lead
 - MacMillan

- Lead Responsibilities
- Meet the legal requirements of MH Act
 - MH Social work
 - MH, LD Reablement
 - Emergency duty Team (Adults & children)
 - Sub regional MH developments
 - Shared Services Development
 - Resettlement Programme



Dec 2016

DISABLED CHILDREN & YOUNG PEOPLE'S TEAM
PRIORY BUILDING, WHITBURN CLOSE, PENDEFORD, WOLVERHAMPTON, WV9 5NJ



FINAL DISCLOSURE

Dec 2016

LOOKED AFTER CHILDREN

COMMISSIONED CHILDREN'S HOMES
Merridale House

Head of LAC
Alison Hinds

Business Support Officer -

Personal Assistant -

Receptionist

CORPORATE PARENTING & EDUCATION TEAM

VIRTUAL SCHOOL HEADTEACHER
Corporate Parenting Officer
Assistant Corporate Parenting Officer
Volunteer Co-Ordinator
Participation Officer
Teaching
Education Support Officers: x 2.5
Psychologists
Assistant Education Psychologist
Data Officer
Unit Administrator

ADOPTION

SENIOR SOCIAL WORKER MANAGER
Family Finding & Adoption Support
Social Worker Unit Manager
Social Workers x 5
Family Support Worker
Adoption Social Work Team
Social Worker Unit Manager
Social Worker x 5
Family Support Worker
Recruitment
Social Worker Unit Manager
Social Worker x 4

Unit Administrators

FOSTERING

SENIOR SOCIAL WORKER MANAGER
Recruitment & Assessment
Social Worker Unit Manager
Social Workers x 3
Support Worker
Social Worker Trainer x 1
Foster Carer Support
Social Worker Unit Manager
Social Workers x 6
Family Support
Family & Friends
Social Worker Unit Manager
Social Workers x 3.5
Special Guardianship Worker
Family Support Worker

Unit Administrators

LAC TRANSITIONS

SENIOR SOCIAL WORKER MANAGER
Advanced Practitioner
Unit 1
Social Worker Unit Manager
Social Worker x 3
Young Person Advisor x 5
Family Support Worker
Unit 2
Social Worker Unit Manager
Social Worker x 3
Young Person Advisor x 4.5
Family Support Worker 1
Unit 3
Supported Accommodation Manager
Senior Housing Officer
Housing Officer x 11
EET Co-Ordinator
YEI Key Worker EET

Unit Administrators

LAC SOCIAL WORK

SENIOR SOCIAL WORKER MANAGER
Advanced Practitioner
LAC 1
Social Worker Unit Manager
Social Workers x 5
Family Support Worker
LAC 2
Social Worker Unit Manager
Social Worker x 5
Family Support Worker x 1
LAC 3 Exit From Care
Social Worker Unit Manager
Social Worker x 5
Family Support Worker

Unit Administrators

PERIPATETIC SOCIAL WORKERS
Social Workers x 4:

Professional Advisor
(Fostering and Adoption Panel)

Panel Administrators x 1.5