

Response to Request for Information

Reference FOI 000237
Date 27 June 2016

Children's Services

Request:

I would be grateful if you could provide me with the following information for the authority:

- 1) The current official job description of your Director of Children's Services and their stated responsibilities?

The Council does not have a specific post named Director of Children's Services. Some of the duties that would be encompassed by this role would form part of the responsibilities of the post of Strategic Director (People). However the current service led role most closely aligned to a Director of Children's Services at City of Wolverhampton Council would be the post of Service Director for Children, Young People and Families – see attached job description.

Note: the attached JD for the current post holder is that of Assistant Director for Children, Young People and Families which was issued when first appointed and no new JD with the current/correct title was issued. The change from Assistant Director to Service Director did not involve any change of responsibility, but was merely a change in Job Title; this was implemented across the Council as a whole.

- 2) Whether this job description or their stated responsibilities has changed since 2010 - and details of these changes?
Since 2010 prior to the commencement of the Assistant Director for Children, Young People and Families post in 2013, the most closely comparable post was that of Assistant Director, Children & Family Support. Unfortunately the Job description for this post is unavailable and therefore it is not possible to comment on whether stated responsibilities have changed without this information.
- 3) The salary of the Director of Children's Services?
Currently the role of Service Directors' salary is £87,863 and the Strategic Director (with DCS responsibility) salary is £101,000 to £111,100
- 4) Whether the salary has changed since 2010 and by how much?
The 2010 salary for the post of Assistant Director, Children & Family Support was £82,437. This has increased by £5426.

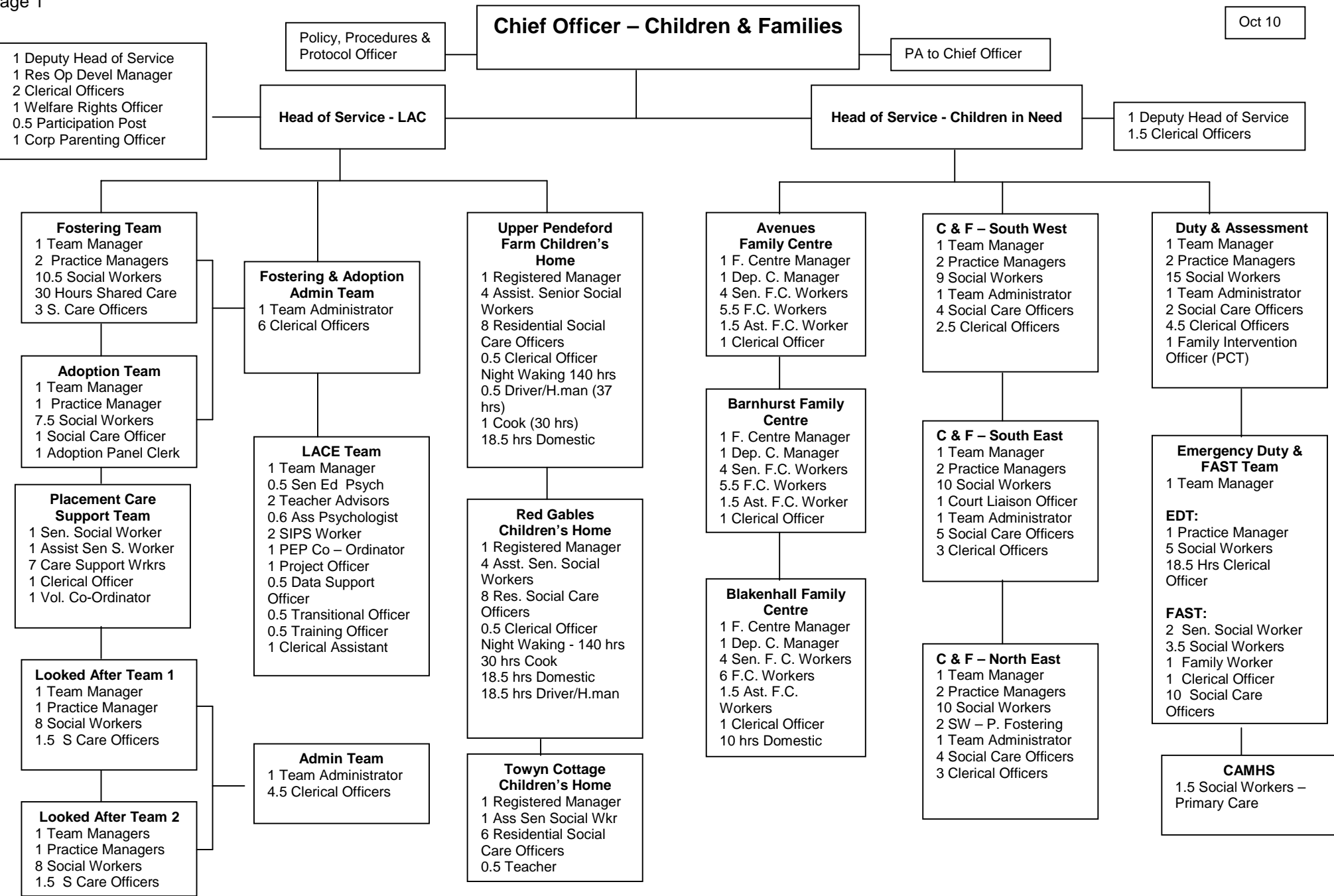
[NOT PROTECTIVELY MARKED]

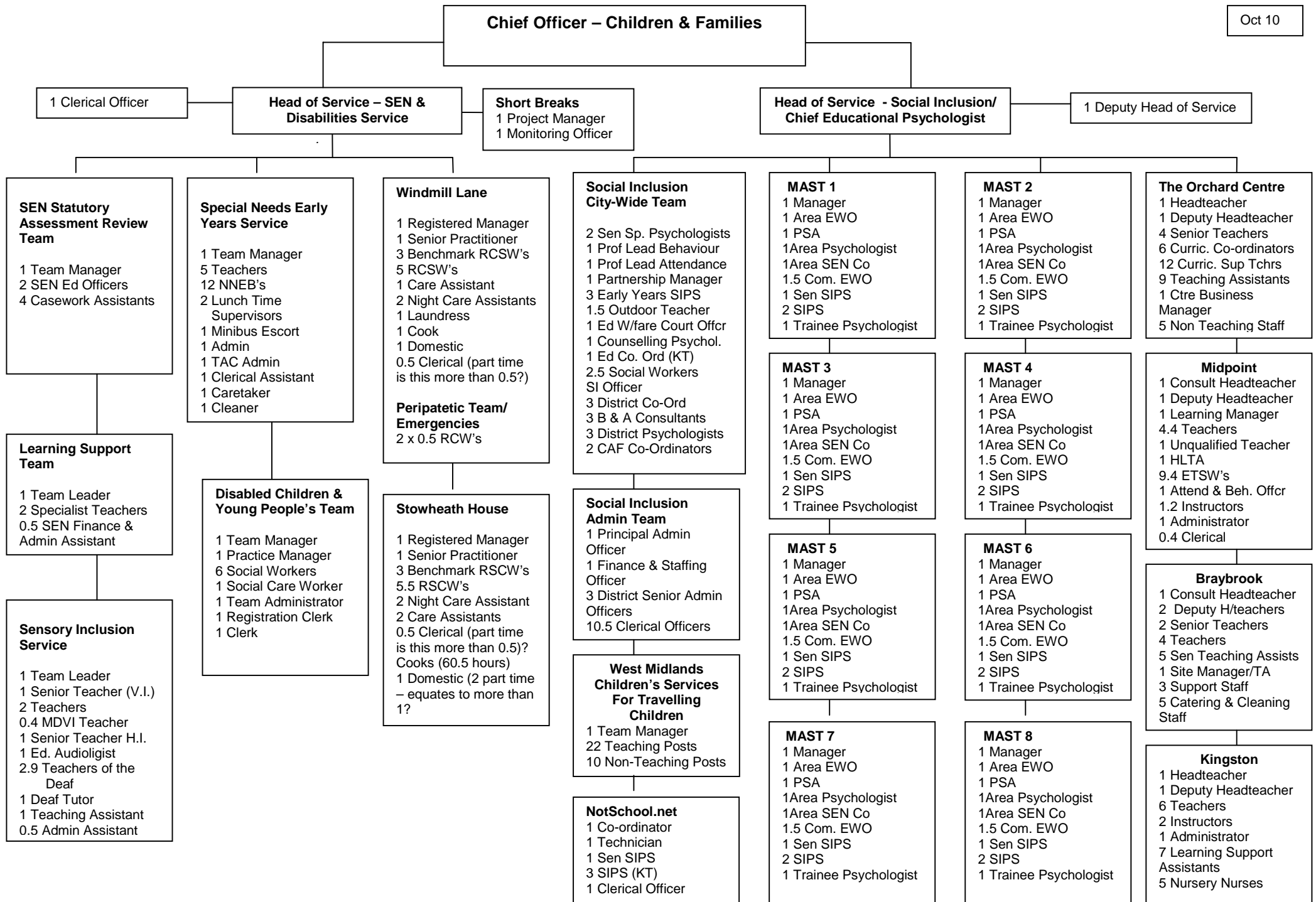
- 5) A current organisational chart of the Children's Services Directorate (all staff, not just senior management)?

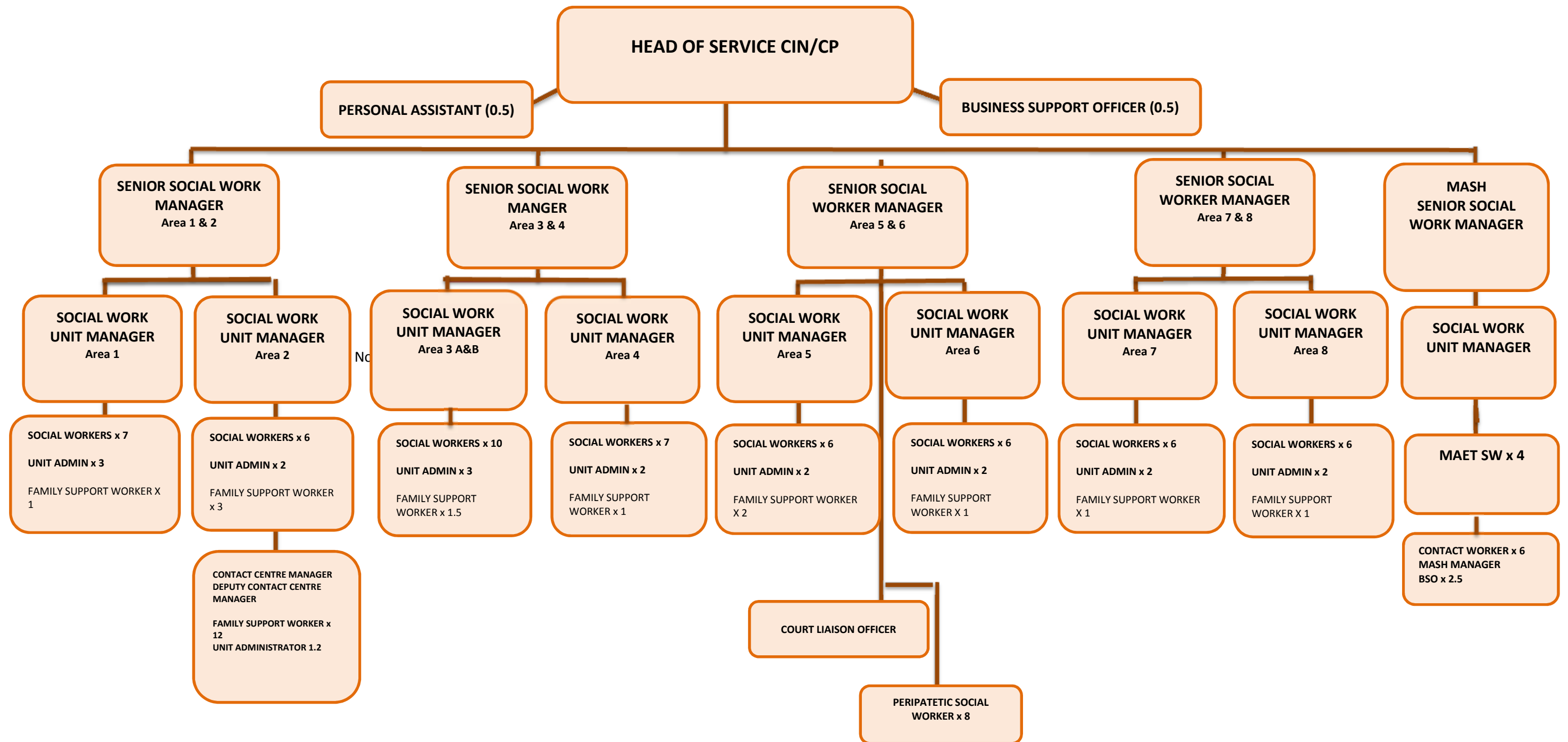
Attached – please note no single chart exists, so several charts provided which cover all areas/departments in the Directorate.

- 6) An organisational chart of the Children's Services Directorate in 2010 (all staff, not just senior management)?

Attached – as 5 above





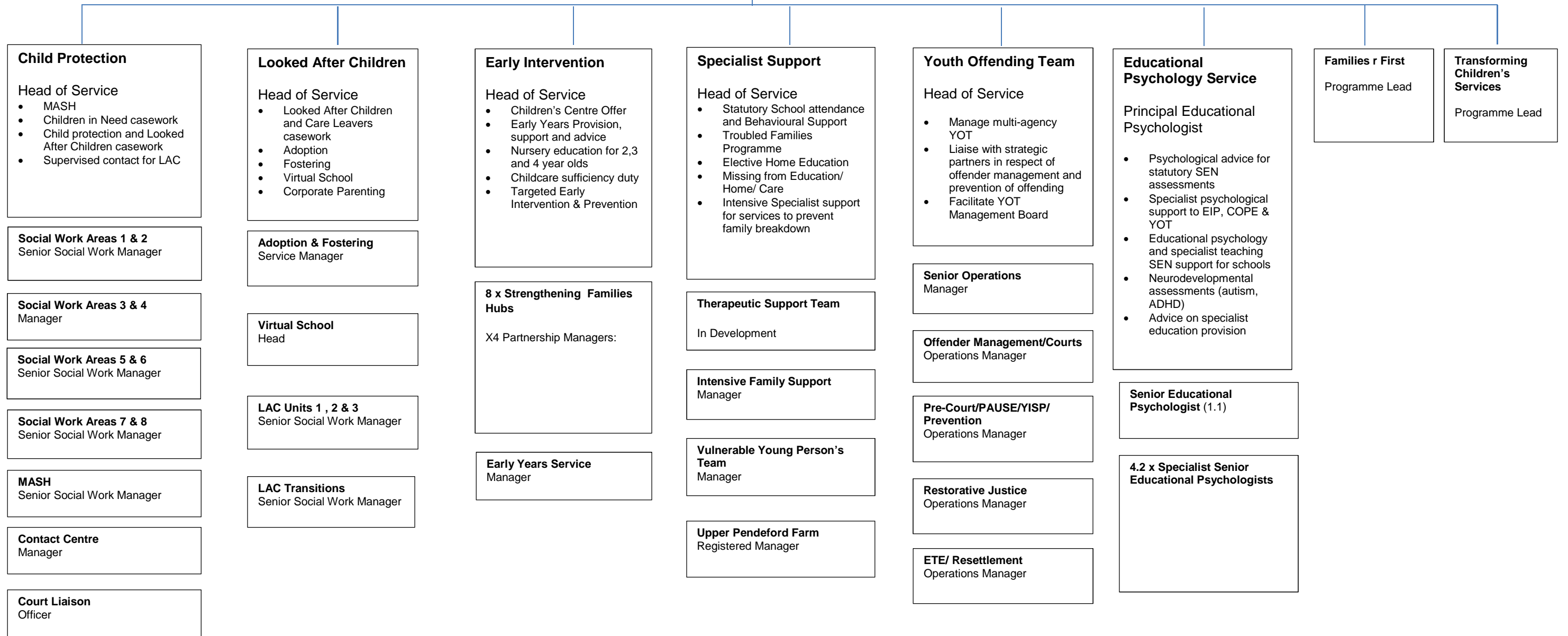


Children & Young People

April 2016

Service Director

- Child Protection
- Looked After Children
- Youth Offending
- Early Intervention
- Educational Psychology
- Specialist Support



Child Protection

Head of Service

- MASH
- Children in Need casework
- Child protection and Looked After Children casework
- Supervised contact for LAC

Social Work Areas 1 & 2

Senior Social Work Manager

Social Work Areas 3 & 4

Manager

Social Work Areas 5 & 6

Senior Social Work Manager

Social Work Areas 7 & 8

Senior Social Work Manager

MASH

Senior Social Work Manager

Contact Centre

Manager

Court Liaison

Officer

Looked After Children

Head of Service

- Looked After Children and Care Leavers casework
- Adoption
- Fostering
- Virtual School
- Corporate Parenting

Adoption & Fostering

Service Manager

Virtual School

Head

LAC Units 1, 2 & 3

Senior Social Work Manager

LAC Transitions

Senior Social Work Manager

Early Intervention

Head of Service

- Children's Centre Offer
- Early Years Provision, support and advice
- Nursery education for 2,3 and 4 year olds
- Childcare sufficiency duty
- Targeted Early Intervention & Prevention

8 x Strengthening Families Hubs

X4 Partnership Managers:

Early Years Service

Manager

Specialist Support

Head of Service

- Statutory School attendance and Behavioural Support
- Troubled Families Programme
- Elective Home Education
- Missing from Education/ Home/ Care
- Intensive Specialist support for services to prevent family breakdown

Therapeutic Support Team

In Development

Intensive Family Support

Manager

Vulnerable Young Person's Team

Manager

Upper Pendeford Farm

Registered Manager

Youth Offending Team

Head of Service

- Manage multi-agency YOT
- Liaise with strategic partners in respect of offender management and prevention of offending
- Facilitate YOT Management Board

Senior Operations

Manager

Offender Management/Courts

Operations Manager

Pre-Court/PAUSE/YISP/Prevention

Operations Manager

Restorative Justice

Operations Manager

ETE/ Resettlement

Operations Manager

Educational Psychology Service

Principal Educational Psychologist

- Psychological advice for statutory SEN assessments
- Specialist psychological support to EIP, COPE & YOT
- Educational psychology and specialist teaching SEN support for schools
- Neurodevelopmental assessments (autism, ADHD)
- Advice on specialist education provision

Senior Educational Psychologist

(1.1)

4.2 x Specialist Senior Educational Psychologists

Families r First

Programme Lead

Transforming Children's Services

Programme Lead

EDUCATIONAL PSYCHOLOGY

Current Structure
March 2016

**Principal Educational Psychologist
(Acting)**

COPE TEAM
Senior Educational Psychologist
Specialist Senior Educational Psychologist
0.4
Counselling Psychologist

EDUCATIONAL PSYCHOLOGY (CHILD & FAMILY SUPPORT TEAMS)
Senior Educational Psychologist
Specialist Senior Educational Psychologist x 4.2
Area Educational Psychologist x 5
Assistant Psychologist x 6
Trainee Educational Psychologist x 4:

SEN/D SPECIALIST TEACHERS

YOUTH OFFENDING TEAM

March 2016

Head of YOT

Senior Operations Manager - Performance Management/ Intensive Supevision/ Safeguarding/ MAPPA

ISS Case Workers x 2:
YOT Officers x 3:

Court Delivery

Operations Manager - Restorative Justice:

Social Workers x 2:
Sessional Staff x 2:
YOT Officers X 2:

Oversight of 9 Active Community Volunteers for

Operations Manager - Education Training & Employment/ Resettlement

Social Worker
EWO Ed Psychologist:
Senior BAMHS Worker:
YOT Officer

Operations Manager Pre - Court/ PAUSE/ YISP/ Prevention

Social Worker: X 2
Assessment & Development Worker:
YISP Workers x 2:
Senior PSA
PSA x 3:
Seconded Youth Worker

Junior Attendance Centre Manager:

Business & Information Manager
YOT Admin Officers: x 5

Non Council Employees:
Probation Officer

Non Council Employees:
School Nurse
Recovery 360
CAMHs

Non Council Employees:
Probation Officer
Prospects (Adviser)

Non Council Employees:
PAUSE
Youth Crime Police Officer



Managing Director

Strategic Director – People
Children in Need

Service Director – Children & Young People
Children in Need

Head of Early Intervention

- Children’s Centre Offer
- Early Years Provision, support and advice
- Nursery education for 2,3 and 4 year olds
- Childcare sufficiency duty
- Targeted Early Intervention

PA to Head of EIP & ISSS

Strengthening Families Partnership Manager – Locality 1 & 2

Strengthening Families Partnership Manager – Locality 3 & 4

Strengthening Families Partnership Manager – Locality 5 & 6

Strengthening Families Partnership Manager – Locality 7 & 8

Early Years Service Manager

- EY & Childcare Development Officer
- Quality & Access Officer
- EY Childcare Support Officer
- Universal Services Manager
- 6 x Universal Services Practitioners
- Operations Support Officer

Locality 1

- 2 x Strengthening Families Delivery Managers
- 10 x Strengthening Families Worker
- 1.5 x Admin
- 1 Receptionist

Locality 2

- 2 x Strengthening Families Delivery Managers
- 9 x Strengthening Families Worker
- 1 x Admin
- 1 Receptionist

Locality 3

- 2 x Strengthening Families Delivery Managers
- 12 x Strengthening Families Worker
- 1.5 x Admin
- 1 Receptionist

Locality 4

- 2 x Strengthening Families Delivery Managers
- 9 x Strengthening Families Worker
- 1 x Admin
- 1 Receptionist

Locality 5

- 2 x Strengthening Families Delivery Managers
- 9 x Strengthening Families Worker
- 1 x Admin
- 1 Receptionist

Locality 6

- 2 x Strengthening Families Delivery Managers
- 10 x Strengthening Families Worker
- 1.5 x Admin
- 1 Receptionist

Locality 7

- 2 x Strengthening Families Delivery Managers
- 13 x Strengthening Families Worker
- 2 x Admin
- 1 Receptionist

Locality 8

- 2 x Strengthening Families Delivery Managers
- 12 x Strengthening Families Worker
- 1.5 x Admin
- 1 Receptionist

Strengthening Families Services Development Officer

Strengthening Families Services Development Officer

Strengthening Families Services Development Officer

Strengthening Families Services Development Officer

Managing Director

Strategic Director – People
• Children in Need

Service Director – Children & Young People
• Children in Need

Head of Specialist Support

- Statutory School attendance and Behavioural Support
- Troubled Families Programme
- Elective Home Education
- Missing from Education/ Home/ Care
- Specialist support services to prevent family breakdown

PA to Head of EIP & ISSS

Key Team

Upper Pendeford Farm – Registered Manager

Operational Manager

2 x Shift Leaders

7 x Short Break/ Outreach Family Support Workers

140 Hrs (5 staff) Night Wake FS Workers

Cook (25 hrs) Domestic (20 hrs)

Clerical

Child & Families Therapeutic Support Team

Families in Focus (Troubled Families)

Project Officer

2 x Families in Focus Advisers

2 x Data Analysts

FiF Support Assistant

Service Development Officer

Vulnerable Young Person’s Team Manager

Vulnerable Young Person’s Risk Coordinator

Elective Home Education & Travelling Children Support Officer

Behaviour & Attendance Coordinator

8 x Behaviour & Attendance Officers

Missing Return Officer

2 x Vulnerable Children Youth Support Workers

Admin Officer

Intensive Family Support Manager

Intensive Family Support Coordinator

Family Group Conferencing & Mediation Coordinator

3 x Family Mediation Facilitators

10 x Intensive Family Support Workers

2 x Intensive Youth Support Workers

Admin Officer

