

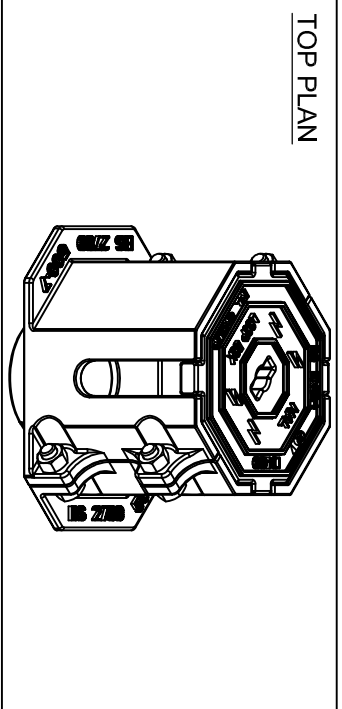
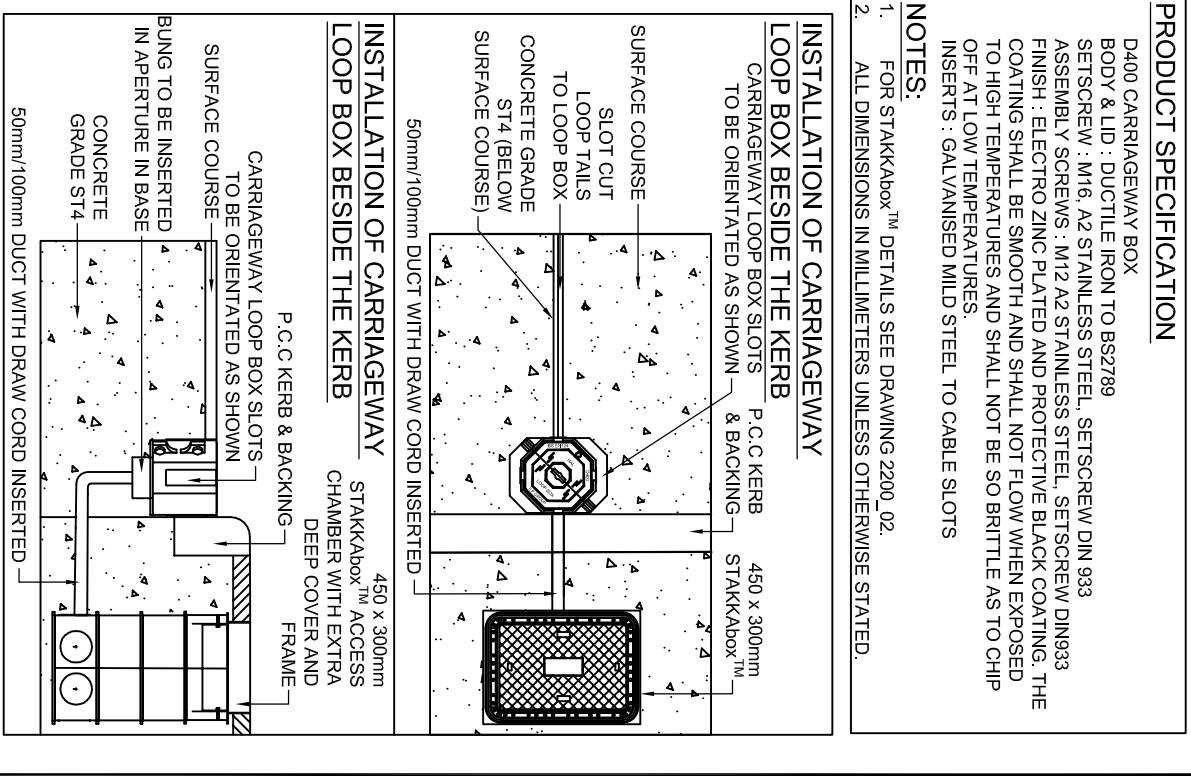
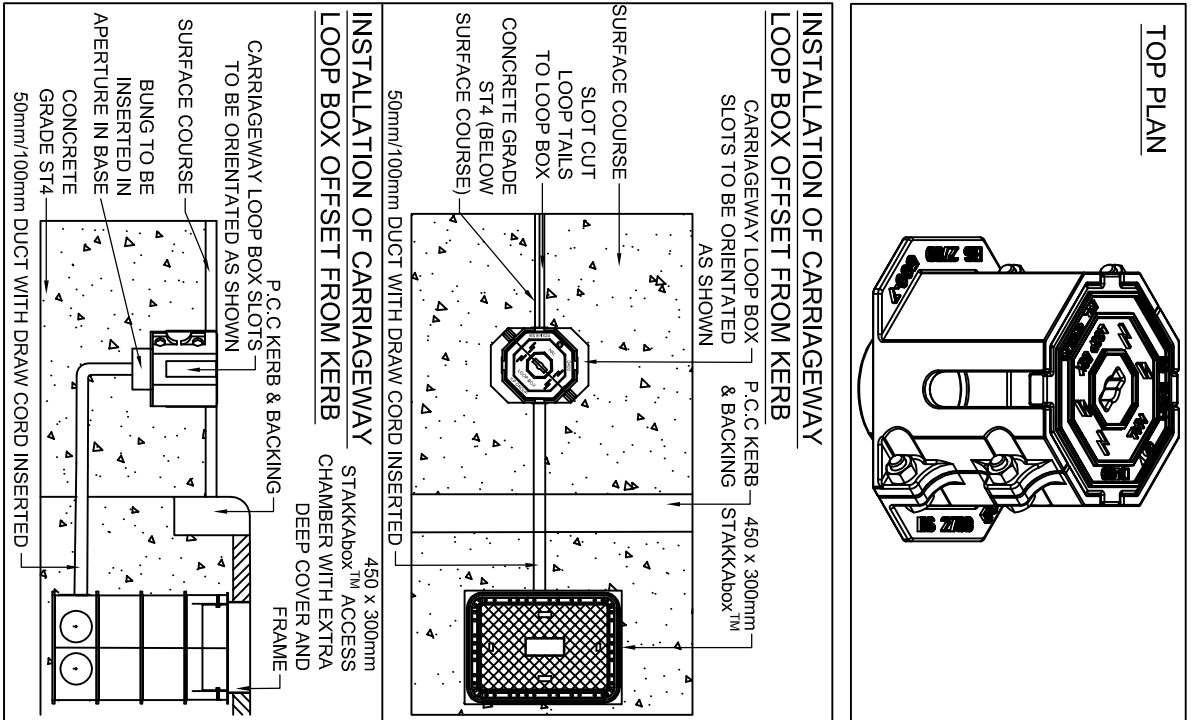
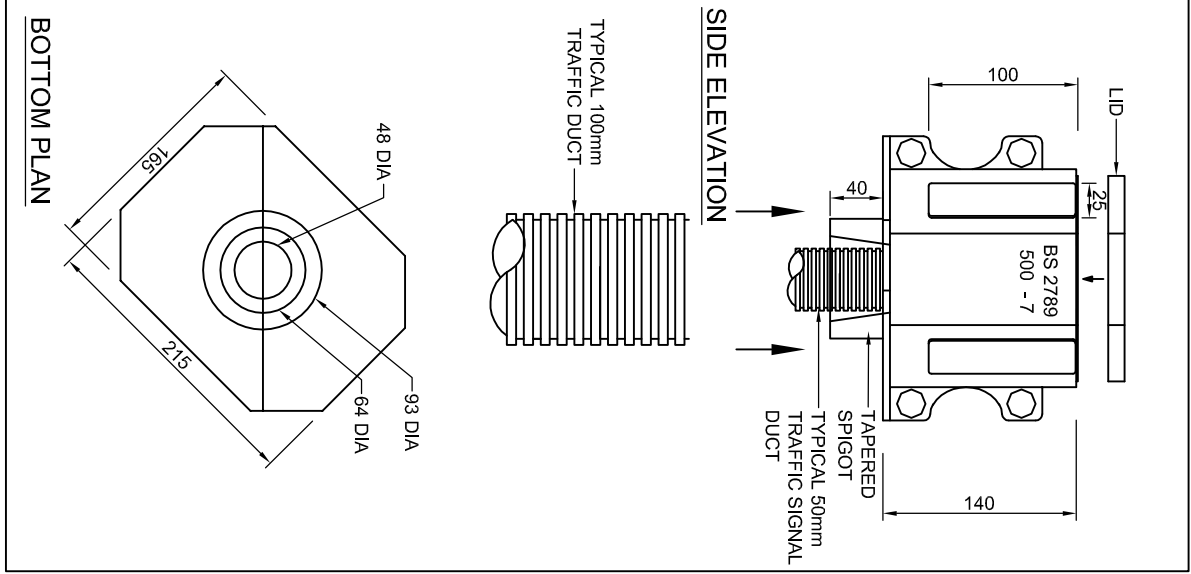


FRAMEWORK CONTRACT FOR HIGHWAY WORKS - MINOR WORKS CONTRACT

Drawing Title:  
**NAL D400 CARRIAGEWAY LOOP BOX**

**STANDARD DETAIL**

DRAWN	ID	DATE	AUG/09
CHECKED	JBF	SCALE	NTS
Drawing Number	<b>SD/2200/01</b>		
Rev	<b>01</b>		



**PRODUCT SPECIFICATION**

D400 CARRIAGEWAY BOX  
 BODY & LID : DUCTILE IRON TO BS2789  
 SETSCREW : M16, A2 STAINLESS STEEL, SETSCREW DIN 933  
 ASSEMBLY SCREWS : M12 A2 STAINLESS STEEL, SETSCREW DIN933  
 FINISH : ELECTRO ZINC PLATED AND PROTECTIVE BLACK COATING. THE COATING SHALL BE SMOOTH AND SHALL NOT FLOW WHEN EXPOSED TO HIGH TEMPERATURES AND SHALL NOT BE SO BRITTLE AS TO CHIP OFF AT LOW TEMPERATURES.  
 INSERTS : GALVANISED MILD STEEL TO CABLE SLOTS

**NOTES:**

- FOR STAKKAbOX™ DETAILS SEE DRAWING 2200\_02.
- ALL DIMENSIONS IN MILLIMETERS UNLESS OTHERWISE STATED.