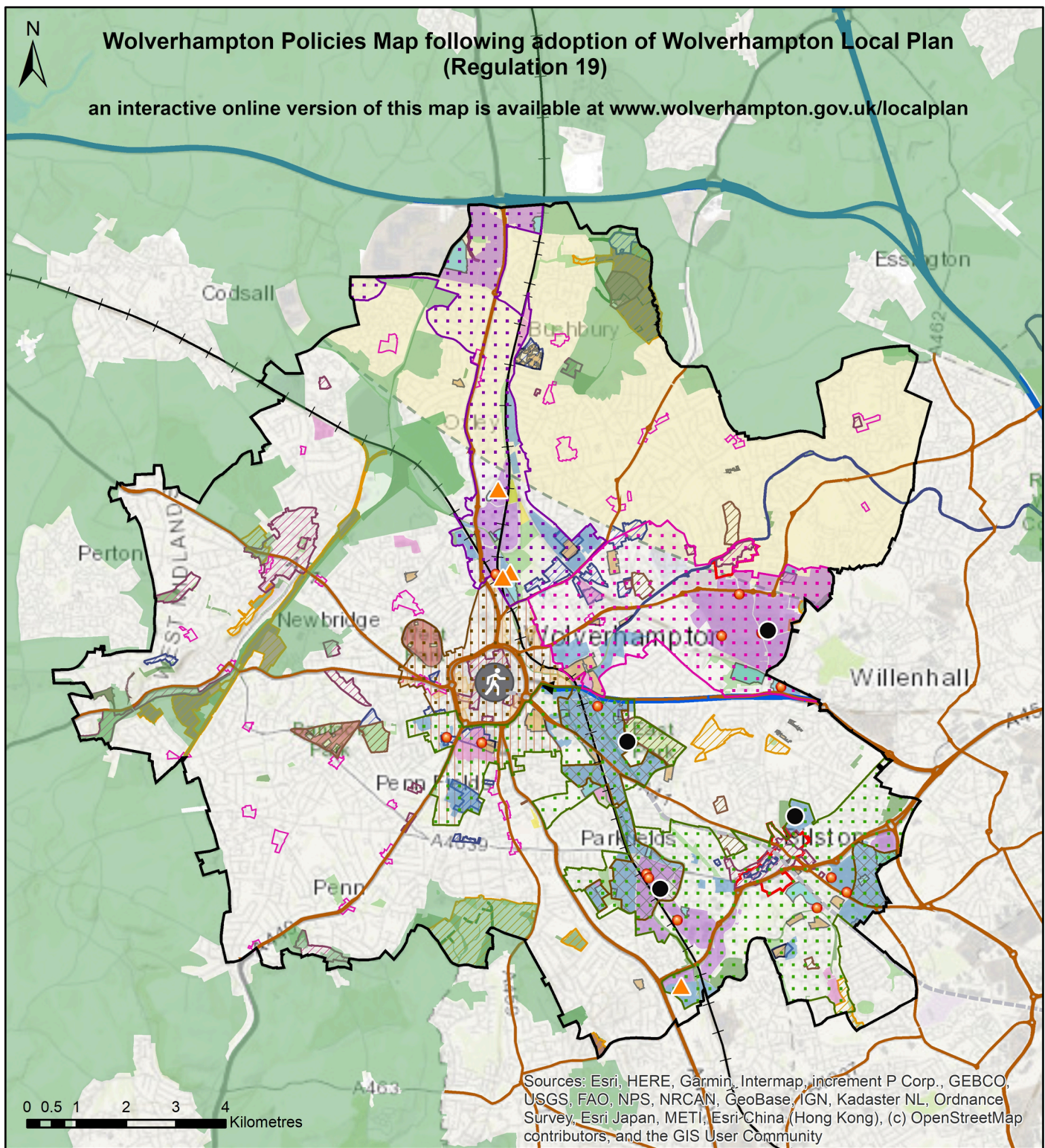




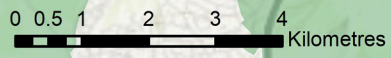
Wolverhampton Policies Map following adoption of Wolverhampton Local Plan (Regulation 19)

an interactive online version of this map is available at www.wolverhampton.gov.uk/localplan



- City Boundary
- Municipal Waste Recovery Infrastructure (Policy W2)
- Other Significant Waste Management Infrastructure (Policy W2)
- Mineral Infrastructure Sites (Policy MIN2)

- Growth Network (Policy CSP1)**
- Bilston Core Regeneration Area
- Stafford Road Core Regeneration Area
- Wednesfield Core Regeneration Area
- Wolverhampton City Centre Strategic Centre
- Preferred Areas for New Waste Facilities (Policy W3)
- Green Belt (Policy CSP1) (for context – UDP designation within Wolverhampton)
- Key Route Network (Policy TRAN2)
- Motorways (Policy TRAN1)
- Rail Network (Policy TRAN1)
- Wolverhampton to Birmingham Metro Line (Policy TRAN1)
- Strategic Transport Investment – City Centre Public Realm & Cycling
- Strategic Transport Investment – A434 City East Gateway
- Employment Development Allocation (Policy EMP1)
- Strategic Employment Area (Policy EMP2)
- Local Employment Area (Policy EMP3)
- Other Employment Area (Policy EMP4)
- Housing Allocation (Policy HOU1)
- Large Housing Sites in Wolverhampton City Centre (for context – 2024 SHLAA)
- Gypsy and Traveller Pitch Allocation (Policy HOU5)
- Existing Authorised Gypsy and Traveller Site (Policy HOU5)
- Existing Unauthorised Gypsy and Traveller Site (Policy HOU5)
- Existing Travelling Showpeople Yard (Policy HOU5)
- Historic Environment Area Designations (Policy ENV5)**
- Designed Landscape of High Historic Value (DLHHV)
- Archaeological Priority Area (APA)
- Area of High Historic Townscape Value (AHHTV)
- Area of High Historic Landscape Value (AHHLV)
- Black Country Geopark Geosites (Policies ENV5 and ENV6)
- Strategic (Tier-One) Centre (Policies CEN1 & CEN2) – CCAAP designation for context
- Bilston Town (Tier-Two) Centre (Policies CEN1 & CEN2) – BCAAAP designation for context
- Wednesfield Village (Tier-Two) Centre (Policies CEN1 & CEN2) – UDP designation for context
- District & Local (Tier-Three) Centres (Policies CEN1 & CEN2) – UDP designation for context
- Site of Importance for Nature Conservation (Policy ENV1) (for context – designated through the Local Site Assessment process)
- Site of Local Importance for Nature Conservation – Linear (Policy ENV1) (for context – designated through the Local Site Assessment process)
- Site of Local Importance for Nature Conservation (Policy ENV1) (for context – designated through the Local Site Assessment process)
- Cannock Chase SAC 15km Zone (Policy ENV2)



Sources: Esri, HERE, Garmin, Intermap, increment P Corp., GEBCO, USGS, FAO, NPS, NRCAN, GeoBase, IGN, Kadaster NL, Ordnance Survey, Esri Japan, METI, Esri China (Hong Kong), (c) OpenStreetMap contributors, and the GIS User Community