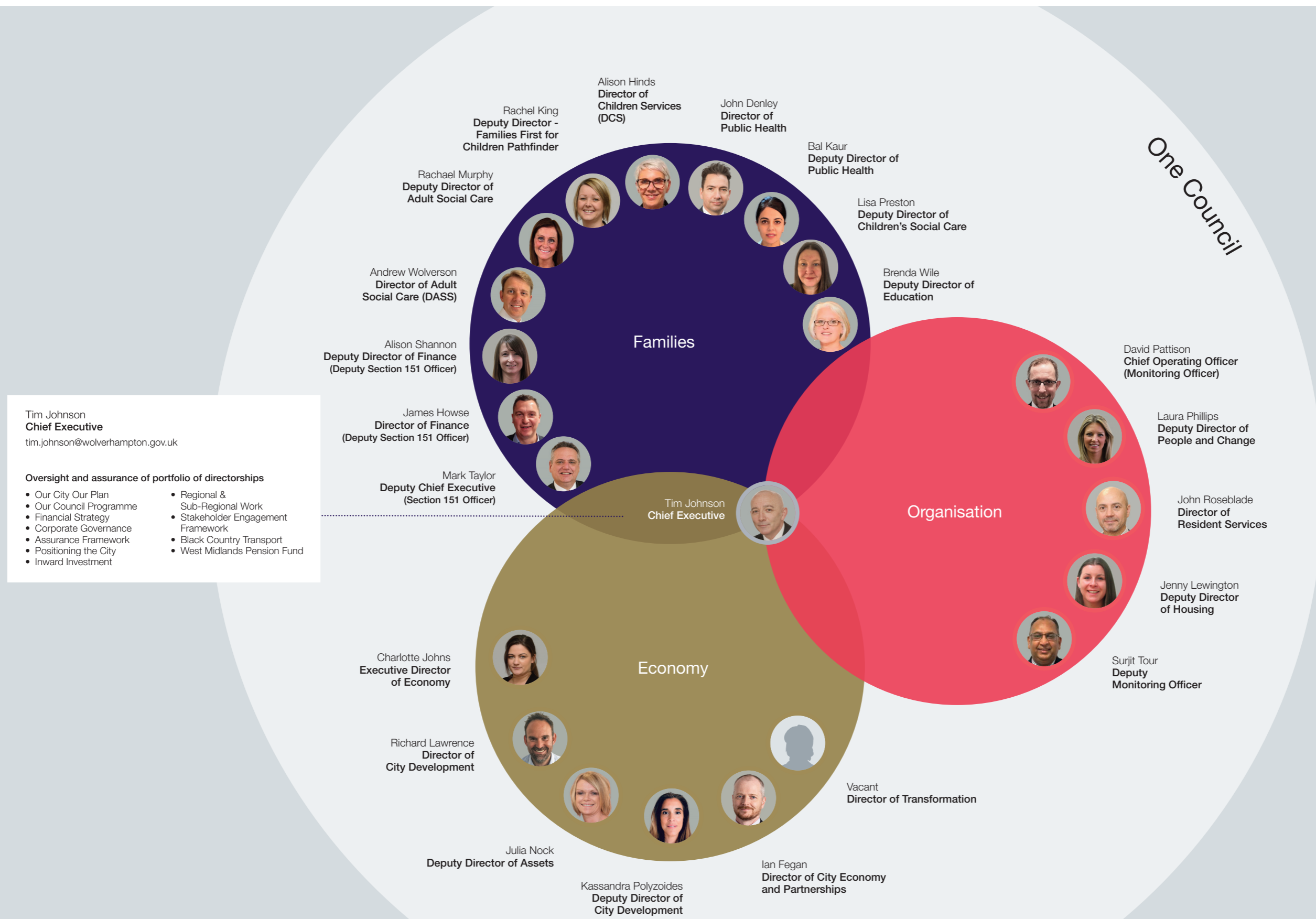


# City of Wolverhampton Council

## Our Senior Team





David Pattison  
**Chief Operating Officer (Monitoring Officer)**

david.pattison@wolverhampton.gov.uk

- Monitoring Officer
- Overall responsibility for Democracy
- Solicitor to the Council
- Deputy Electoral Registration Officer
- Deputy Returning Officer - Elections & Referenda
- Senior Information Risk Owner - Governance
- Lead on Climate Action
- Overall responsibility for services within organisation theme



Surjit Tour  
**Deputy Monitoring Officer**

surjit.tour@wolverhampton.gov.uk

- Democratic Services
- Mayoral and Councillors
- Civic Support



Tim Munro  
**Head of Service Health and Safety**

tim.munro@wolverhampton.gov.uk

- Strategic Health and Safety Action Plan
- Consult/advise managers and employees on matters of health & safety
- Produce and implement health & safety policies
- Undertake health & safety audits and safety inspections
- Accident investigation / analysis and RIDDOR reports
- Health & safety training
- Potentially Violent Persons Register
- Health & safety support to education services and maintained schools
- Strategic Health Safety and Wellbeing Board
- Liaison with health & safety enforcement bodies
- Safety advice at public events
- Resilience and Emergency Planning



John Roseblade  
**Director of Resident Services**

john.roseblade@wolverhampton.gov.uk

- City Transport
- Highways
- Environmental Services
- Parks
- Bereavement Services
- Coroner
- Waste & Recycling
- Fleet
- Passenger Transport
- Environmental Health
- Trading Standards
- Licensing
- Housing
- Housing SRO



Laura Phillips  
**Deputy Director of People and Change**

laura.phillips@wolverhampton.gov.uk

- Our People Strategy
- People Development & Experience
- People Policy & Strategy
- Trade Unions
- Support Services
- Projects & Change
- Strategic and Operational People Advice/Support
- Apprenticeships (Council & City)



Tracey Christie  
**Head of Legal Services**

tracey.christie@wolverhampton.gov.uk

- Head of Legal Services
- Deputy Monitoring Officer
- Civil Litigation
- Childcare Law
- Property and Contractual Law
- Regulatory Law
- Planning Law
- Prosecutions
- Governance Advice
- Solicitor to WMPF
- Proper Officer for Local Government Act Functions
- Council Registrar for Local Land Charges



Laura Collings  
**Head of Policy and Strategy**

laura.collings@wolverhampton.gov.uk

- Strategy and Policy Development
- Thematic Planning
- Strategic Project and Programme Management
- System Redesign Strategic Lead
- Regional Policy Oversight including WMCA
- Consultation and Engagement Strategy



Perminder Balu  
**Head of Green Cities and Circular Economy**

perminder.balu@wolverhampton.gov.uk

- 2028 Net Zero Action Plan
- 2041 Net Zero Strategy
- Circular Economy
- Carbon Management Plan
- Energy Strategy
- Citizens Assembly 2023/24
- District Heat Network
- Net Zero Neighbourhood
- Local Area Energy Plan
- Retro-Fit



Laura Gittos  
**Head of Governance**

laura.gittos@wolverhampton.gov.uk

- Democratic Services
- Scrutiny
- Councillor Enquiries
- Electoral Services
- Civic Support inc. Mayoral and Councillors

# City of Wolverhampton Council

## Resident Services Leadership Team



**John Roseblade**  
**Director of Resident Services**

john.roseblade@wolverhampton.gov.uk

- City Transport
- Highways
- Environmental Services
- Parks
- Bereavement Services
- Coroner
- Waste & Recycling
- Fleet
- Passenger Transport
- Environmental Health
- Trading Standards
- Licensing
- Housing
- Housing SRO



**Jenny Lewington**  
**Deputy Director of Housing**

jenny.lewington@wolverhampton.gov.uk

- New Housing Development
- Council Housing
- Affordable Housing
- New Market Housing
- Estate Based Regeneration
- Housing Strategy and Policy
- Asset Management and Financial Planning
- Managing Agents – Delivery Plans Performance and Governance
- Private Rented Sector Housing Improvement
- Housing Assistance programmes
- Fuel Poverty and Energy Efficiency
- Homelessness
- Private Sector Housing



**Steve Woodward**  
**Head of Environmental Services**

steve.woodward@wolverhampton.gov.uk

- Grounds Maintenance
- Parks and Open Spaces Management
- Arboriculture
- Bereavement and Crematoria Services
- Collection and Delivery of Residential Bins
- Bulky, Commercial and Assisted Waste Collection
- Household Recycling Centres
- Fly Tipping/Rubbish on the Streets
- Pest Control
- Waste Transformation Programme
- Waste & Recycling Strategy
- Waste Disposal & Recycling Contracts
- Strategic Waste Infrastructure
- Commercial and Garden Waste
- Business Development



**Vacant Commercial Regulation Manager**

- Licensing Strategy and Policy
- Premises/Alcohol Licensing – General Licensing
- Street Trading
- Environmental Health - Food Safety and Health & Safety
- Environmental Permits
- Commercial Noise
- Trading Standards -
- Weights & Measures
- Markets Service
- Wholesale Market
- Private Sector Housing
- HMO licensing
- Empty Properties
- Taxi Licensing & National Taxi Compliance
- Public Events Health & Safety
- Sports Ground Safety



**John Charles**  
**Head of Network Management**

john.charles@wolverhampton.gov.uk

- UTC/Black Country Shared Service
- Roadworks Management
- Permits and Licensing
- Parking Services
- School Crossings
- Road Safety
- Traffic Regulation and Event Management
- Highways Assets Management and Structures
- Street Lighting
- Planned and Reactive Highway Maintenance
- Flood Risk Management
- Drainage
- Winter Maintenance



**Marianne Page**  
**Head of Strategic Transport**

marianne.page@wolverhampton.gov.uk

- Strategic Transport
- Major Projects
- Sustainable Transport
- Black Country Regional Partnerships
- Black Country Route Managers
- Transport Planning



**Beth Cooper**  
**Transport and Fleet Manager**

beth.cooper@wolverhampton.gov.uk

- Passenger Transport
- Fleet Services
- Workshop
- Fleet Transformation



**Karen Beasley**  
**Head of Housing Development**

karen.beasley@wolverhampton.gov.uk

- New build Council Housing
- New Build Grants and Funding
- Council Estate/Housing Area Renewal and Regeneration
- Oversight of Asset Management and Housing Investment
- Engagement with Homes England
- Utilisation of S106 and RTB 1-4-1 Receipts
- Affordable Housing Conversion Programme
- Council Property Buy-Back Scheme
- HRA Non-Residential Asset Register
- HRA Asset Lease / Leaseholder Management

# City of Wolverhampton Council

## People and Change Leadership Team



Laura Phillips  
**Deputy Director of People and Change**

[laura.phillips@wolverhampton.gov.uk](mailto:laura.phillips@wolverhampton.gov.uk)

- Our People Strategy
- People Development & Experience
- People Policy & Strategy
- Trade Unions
- Support Services
- Projects & Change
- Strategic and Operational People Advice/Support
- Apprenticeships (Council & City)



Adrian Turner  
**Branch Secretary - Unison**

[adrian.turner@wolverhampton.gov.uk](mailto:adrian.turner@wolverhampton.gov.uk)



Suky Mattu  
**Head of People Services**

[sukhvinder.mattu@wolverhampton.gov.uk](mailto:sukhvinder.mattu@wolverhampton.gov.uk)

- People Policy & Strategy
- People Transformation Programme
- Recruitment and Retention
- People Support Desk
- Pay and Reward
- People Operational Advice/support
- Trade Unions
- Employee Relations



Steven Cartwright  
**Head of Projects and Change**

[steven.cartwright@wolverhampton.gov.uk](mailto:steven.cartwright@wolverhampton.gov.uk)

- Project, Programme and Change Management
- Project Management Office (PMO)
- Project/Programme Assurance
- Business Analysis
- Business Improvement



Julia Goudman  
**Head of Support Services**

[julia.goudman@wolverhampton.gov.uk](mailto:julia.goudman@wolverhampton.gov.uk)

- Support Services
- Executive Support
- Mailroom



Lucy Searle  
**Service Development Manager**

[lucy.searle2@wolverhampton.gov.uk](mailto:lucy.searle2@wolverhampton.gov.uk)

- Service Development and Improvement
- Service Performance and Assurance



Joanna Grocott  
**Head of People Development and Experience**

[joanna.grocott@wolverhampton.gov.uk](mailto:joanna.grocott@wolverhampton.gov.uk)

- Our People Strategy Development and Delivery
- People Development
- People Experience
- Council Apprenticeships
- City Wide Apprenticeship Strategy
- People Transformation Programme





Charlotte Johns  
**Executive Director of Economy**

charlotte.johns@wolverhampton.gov.uk

- Strategic Lead for Economy Portfolio
- City Economy & Partnerships
- City Development
- Transformation
- WM Strategic Migration Partnership
- Adult Education & Skills Portfolio
- Driven by Digital, New Technologies e.g. AI
- Strategic relationships with key stakeholders, partners including businesses, government agencies, communities, LA's, Universities, regeneration partners, WMCA



Ian Fegan  
**Director of City Economy and Partnerships**

ian.fegan@wolverhampton.gov.uk

- Corporate Relationship Management
- Media Enquiries
- Promoting the City
- Arts and Culture
- City Events
- Digital Engagement / Social Media
- Internal Communication & Engagement
- Corporate Campaign Planning
- Events Strategy & Delivery
- City Marketing
- Wolverhampton Pound
- External Funding



Richard Lawrence  
**Director of City Development**

richard.lawrence@wolverhampton.gov.uk

- City Development
- City Planning
- City Strategic Projects
- Assets



Vacant  
**Director of Transformation**

- Data driven decision making, insight, performance, and analytics.
- Digital transformation
- Customer Services, Registrars & Archives
- Equality, Diversity, and Inclusion



Dally Panesar  
**Head of West Midlands Strategic Migration Partnership**

dally.panesar@wolverhampton.gov.uk

- Leadership and management of the Cross-Sector Partnership on Migration Issues for the West Midlands Region, hosted by City of Wolverhampton Council



Brenda Wile  
**Deputy Director - Education**

brenda.wile@wolverhampton.gov.uk

- Inclusion Support
- School Improvement
- Early Years
- Traded Services
- Post 16
- Alternative Provision
- Special Educational Needs and Disability
- School Organisation and Admissions
- Education Performance
- Skills
- Adult Education



Ian Fegan  
**Director of City Economy and Partnerships**

ian.fegan@wolverhampton.gov.uk

- Corporate Relationship Management
- Media Enquiries
- Promoting the City
- Arts and Culture
- City Events
- Digital Engagement / Social Media
- Internal Communication & Engagement
- Corporate Campaign Planning
- Events Strategy & Delivery
- City Marketing
- Wolverhampton Pound
- External Funding



Chris Kirkland  
**Head of City Investment**

christopher.kirkland@wolverhampton.gov.uk

- Inward Investment Strategy
- Capital Investments
- West Midlands Growth Company (WMGC)
- Key Accounts
- Tourism Trade
- Investment Delivery



Richard Wyatt  
**Head of Communications**

richard.wyatt@wolverhampton.gov.uk

- PR and Marketing Management
- Integrated Strategic Corporate Communications
- Strategic Reputational Management
- Key Strategic Campaigns
- Internal Communications and Staff Engagement
- Stakeholder Management
- Media Relations
- City Promotion



Heather Clark  
**Head of City Economy and External Funding**

heather.clark2@wolverhampton.gov.uk

- External Funding including Strategic Project and Programme Pipeline
- Co-ordination of Strategic Funding Activity
- Digital co-ordinator including: Digital Infrastructure, Digital Inclusion and Innovation
- Visitor Experience



Louise West  
**Strategic Lead - Wolverhampton Pound**

louise.west@wolverhampton.gov.uk

- Wolverhampton Pound approach
- Social Value
- Social Economy
- Community wealth building
- Anchor Network

# City of Wolverhampton Council

## Regeneration Leadership Team



Richard Lawrence  
**Director of City Development**

richard.lawrence@wolverhampton.gov.uk

- City Development
- City Strategic Projects
- City Planning
- Assets



Kassandra Polyzoides  
**Deputy Director of City Development**

kassandra.polyzoides@wolverhampton.gov.uk

- City Development
- City Planning
- Our Future City Plan



Julia Nock  
**Deputy Director of Assets**

julia.nock@wolverhampton.gov.uk

- City Assets and Facilities
- One Public Estate
- Assets Review
- Workplace Strategy



Vacant  
**Head of City Development**

- City Centre Regeneration
- Growth Corridor Programme
- Connected Places
- Major Project Pipeline



Stephen Alexander  
**Head of City Planning**

stephen.alexander@wolverhampton.gov.uk

- Planning Policy
- Planning Applications
- Planning Compliance
- Building Control
- Historic Environment



Stuart Rutherford  
**Head of Assets**

stuart.rutherford@wolverhampton.gov.uk

- Integrated Asset Management Plan
- Estates Service for Corporate, Commercial and Education Portfolios
- Strategic Asset Plan
- Statutory Property Compliance
- Estate Management (including commercial premises, disposal of surplus land and property assets)
- One Public Estate
- Our Assets Programme



Julie Bell-Barker  
**Head of Projects and Works**

julie.bell-barker@wolverhampton.gov.uk

- Construction Project and Programme Management
- Cost Consultancy and Design
- Engineering Services
- Structural and Geotechnical Services
- Capital Projects (New Build and Refurbishment)
- Planned Maintenance
- Compliance and Reactive Maintenance



Chris East  
**Head of Facilities**

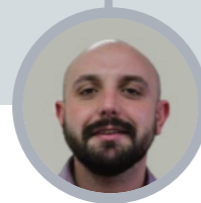
chris.east@wolverhampton.gov.uk

- Catering
- Cleaning
- Facilities Management (Civic and Corporate)
- Service Development – including free school meals



Vacant  
**Director of Transformation**

- Data Driven Decision Making, Insight, Performance, and Analytics
- Digital transformation
- Customer Services, Registrars and Archives
- Equality, Diversity, and Inclusion



James Amphlett  
**Chief Digital Officer**

james.amphlett2@wolverhampton.gov.uk

- Lead for Digital and Data Strategy including AI



Lamour Gayle  
**Head of Customer Engagement and Registrars**

lamour.gayle2@wolverhampton.gov.uk

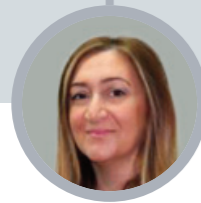
- Customer Contact Centre
- Receptions
- Customer Relationship Management
- Customer Engagement
- Register Office (births, deaths, marriages, civil partnerships and citizenship)
- Service Development
- Archives



Jin Takhar  
**Head of Equality, Diversity and Inclusion**

j.in.takhar@wolverhampton.gov.uk

- Corporate Equality, Diversity and Inclusion (EDI) Strategy, Policies and Procedures
- Strategic, Policy and Transformational Lead on all matters related to EDI across the Council
- Council wide Equality Impact Assessments and Analysis
- Partnership working with Regional and National Agencies as well as Local Partnerships including EDI
- Community / Stakeholder Engagement Forums
- Staff Engagement Forums
- Council wide EDI Peer Assessments and National Accreditations
- Management of the Council's SLA with Wolverhampton Homes and Linked Bodies



Anna Zollino-Biscotti  
**Head of Information Governance and Customer Assurance**

anna.zollino-biscotti@wolverhampton.gov.uk

- Information Governance (strategic & operational)
- Data Protection
- Freedom of Information/ Environmental Regulations
- Information Sharing
- Records Management
- Information Security
- Customer Liaison
- LGSCO/HO Enquiries
- Ombudsman Link Officer



Jai Ghai  
**Head of Digital and IT**

jai.ghai@wolverhampton.gov.uk

- ICT Programme and Project Management, delivering against corporate priorities and strategies
- Provision of Corporate ICT Service, enabling Agile Working
- Internet Provision
- Cyber Security
- Research and development of new technologies
- Digital Print Solutions - Provision of Print and Design Services



Vacant  
**Head of Data and Analytics**

james.amphlett2@wolverhampton.gov.uk

- Data Analysis
- National and Regional Performance Monitoring
- Data Interpretation
- Performance Management
- Digital Dashboards Development and Promotion including Power BI
- Management of Information for Internal and External Purposes
- Benchmarking





Mark Taylor  
**Deputy Chief Executive (Section 151 Officer)**

mark.taylor@wolverhampton.gov.uk

- Section 151 Officer
- Corporate Parenting
- Safer Wolverhampton Partnership

Chair of  
WV Living Board  
marktaylor@  
wvliving.co.uk

City of Wolverhampton  
College - Vice Chair  
taylorma@  
wolvcoll.ac.uk



James Howse  
**Director of Finance**

james.howse@wolverhampton.gov.uk

- Deputy Section 151 Officer
- Audit Services
- Strategic Financial Advice & Support
- Revenue & Benefits
- The Hub
- Financial & Investment Strategy
- Procurement Service
- Commercial Services



Andrew Wolverson  
**Director of Adult  
Social Care (DASS)**

andrew.wolverson@wolverhampton.gov.uk

- Assessment and Support Planning for Adults
- Adult Safeguarding/Multi-Agency Safeguarding Hub
- Adult Care Provision
- Principal Social Worker
- Better Care/Integrated Working with Health
- Community Financial Support
- Adults Commissioning
- Approved Mental Health Practitioners and Assessments
- Independent Living Services
- Carers Support
- Adults Improvement



John Denley  
**Director of  
Public Health**

john.denley@wolverhampton.gov.uk

- Public Health
- Community Safety and Cohesion
- Health Improvement
- Health Protection
- Intelligence and Evidence
- WV Active and Sports Health Partnerships
- Workforce Wellbeing
- Public Health Commissioning
- Personal, Social, Health and Economic Education
- Outdoor Education
- Libraries and Community Centres
- NHS Partnerships and Systems



Alison Hinds  
**Director of Children Services  
(DCS)**

alison.hinds@wolverhampton.gov.uk

- Adult Education and Duty Team
- Child Transformation Work
- Children & Young People in Care
- Children in Need & Child Protection
- Children's Commissioning
- Children's Partnership Boards
- Connexions Service
- Disabled Children & Young People
- Early Intervention
- Education Psychology
- Family for Children
- Family Hubs
- Financial Well Being
- Learning Communities
- Multi Agency Safeguarding Hub
- Post 16 Education
- Safeguarding
- School Improvement
- School Organisation and Admissions
- SEND & Inclusion Support
- Skills
- Specialist Support
- Wolves at Work; skills, jobs and careers
- Youth Justice Service
- Youth Offending



James Howse  
**Director of Finance**

james.howse@wolverhampton.gov.uk

- Deputy Section 151 Officer
- Audit Services
- Strategic Financial Advice & Support
- Revenue & Benefits
- The Hub
- Financial & Investment Strategy
- Procurement Service
- Commercial Services



Alison Shannon  
**Deputy Director of Finance**

alison.shannon@wolverhampton.gov.uk

- Deputy Section 151 Officer
- Medium Term Financial Planning
- Technical Accounting and Reporting
- Financial Modelling
- Treasury Management
- Strategic Financial Advice and Support



Ian Cotterill  
**Head of Audit**

ian.cotterill@wolverhampton.gov.uk

- Internal Audit
- Risk Management
- Insurance
- Counter Fraud
- Investigations



Darren Herries  
**Head of The Hub**

darren.herries@wolverhampton.gov.uk

- Payment and Purchasing
- Banking and Income Management
- Payroll and Pensions
- Quality & Improvement
- HR Administration



Tracey Richards  
**Head of Revenues and Benefits**

tracey.richards@wolverhampton.gov.uk

- Council Tax Administration
- Business Rates
- Debt Management
- Housing Benefit/Council Tax Support



Fiona McLaughlin  
**Head of Procurement**

fiona.mclaughlin@wolverhampton.gov.uk

- Procurement and Contract Management
- Provision of Procurement Training
- Management of Procurement Strategy and Operating Protocol
- Identification of Savings Opportunities in External Spend
- Maintenance of Corporate Contracts Register



Parvinder Uppal  
**Head of Commercial Services**

parvinder.uppal@wolverhampton.gov.uk

- Leadership, advice and support on commercial issues
- Delivery of the commercial aspects
- Implementation of commercial strategy and plans for trading opportunities
- Strategic contracts
- Opportunities for savings and alternative service delivery models
- Responsibility for commercial training
- Contract Management

# City of Wolverhampton Council

## Adult Social Care Leadership Team



Andrew Wolverson  
**Director of Adult Social Care (DASS)**

andrew.wolverson@wolverhampton.gov.uk

- Assessment and Support Planning for Adults
- Adult Safeguarding/Multi-Agency Safeguarding Hub
- Adult Care Provision
- Principal Social Worker
- Better Care/Integrated Working with Health
- Community Financial Support
- Adults Commissioning
- Approved Mental Health Practitioners and Assessments
- Independent Living Services
- Carers Support
- Adults Improvement

Shared role  
across Adult  
and Children



Vacant  
**Deputy Director - Commissioning and Transformation**

- Commissioning
- Partnerships
- Co-production, Engagement and Participation
- Information, Advice and Support Services
- Children's and Adult Transformation Programmes

Shared role  
across Adult  
and Children

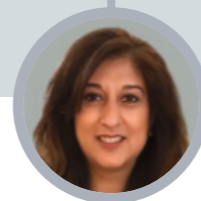


Jenny Rogers  
**Principal Social Worker**

jennifer.rogers@wolverhampton.gov.uk

- Matrix Working Across Adults and Children's Services
- Quality Assurance
- Policy and Procedures
- Workforce Development Programme
- Social Work Development Board
- Social Work Performance and Practice Standards
- Personalisation

Role includes support to Adult Social Care Heads of Service and direct support to Director of Adult Social Care



Meena Dulai  
**Head of Adult Improvement**

meena.dulai@wolverhampton.gov.uk

- Transforming Adult Social Care
- Lead on Corporate Projects
- Lead on Whole Family Approach
- Strategic Commissioning for Adult Social Care
- Strategic Multi-Agency Safeguarding Hub Development
- Support and Deputise for Director of Adult Services



Rachael Murphy  
**Head of Adult Services and Health Partnerships**

rachael.murphy@wolverhampton.gov.uk

- Lead for Acute and Non-Acute Hospitals
- Discharge to Assess (D2A) Project
- Assistive Technology
- Community Occupational Therapy Service
- Sensory Impairment Service
- Independent Living Service
- Assessment and Case Management for Older People, People with Physical Disabilities and People with Learning Disabilities (East and Hospital Team)
- Lead for Older People and Mental Health



Paula Morris  
**Head of Adult Services and Communities**

paula.morris@wolverhampton.gov.uk

- North Locality and West Locality
- Adult Social Work Teams
- Forensic LD Social Work Lead
- Transition Link to Disabled Children and Young People Team/SEND
- Regional Transforming Care Programme
- Lead for Disability and Autism
- Housing Liaison



Sandra Ashton-Jones  
**Head of Mental Health**

sandra.ashton-jones@wolverhampton.gov.uk

- Meet the Legal Requirements of the Mental Health Act / Approved Mental Health Professional
- Mental Health Team
- Sub Regional Mental Health Developments
- Operational Safeguarding Lead
- Adult Multi-Agency Safeguarding Hub
- Lead for Carers/Carer Support Team
- Community Offer/Community Support Team



Tom Denham  
**Head of Adult Provision**

tom.denham@wolverhampton.gov.uk

- Residential Services
- Short Breaks
- Community Pathways
- Day Opportunities
- Reablement/Enablement Services
- Transport Liaison
- Employment Liaison
- Community Equipment Service
- CQC Nominated Individual



Helen Winfield  
**Head of Community Financial Support**

helen.winfield@wolverhampton.gov.uk

- Financial Assessments and Billing
- Welfare Rights
- Macmillan Welfare Rights
- Direct Payments
- Destitute Plus Provision
- NHS Continuing Healthcare Lead
- Personalised Support (including Brokerage)



**Bal Kaur**  
**Deputy Director of Public Health**

bal.kaur@wolverhampton.gov.uk

- Public Health Strategy and Policy Development
- Public Health Commissioned Services
- Public Health Core Offer to NHS
- Public Health Intelligence and Performance - Workforce Development



**John Denley**  
**Director of Public Health**

john.denley@wolverhampton.gov.uk

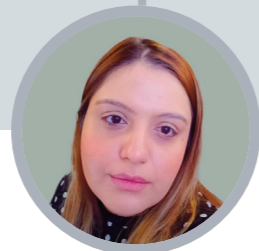
- Public Health
- Community Safety and Cohesion
- Health Improvement
- Health Protection
- Intelligence and Evidence
- WV Active and Sports Health Partnerships
- Workforce Wellbeing
- Public Health Commissioning
- Personal, Social, Health and Economic Education
- Outdoor Education
- Libraries and Community Centres
- NHS Partnerships and Systems



**Kate Warren**  
**Consultant in Public Health**

kate.warren@wolverhampton.gov.uk

- System Leadership
- Strategic Population Healthcare Planning
- Commissioning Support
- Intelligence and Data Science
- NHS Commissioning Policy
- NHS Provider Policy
- Building Public Health capacity



**Ainee Khan**  
**Health Protection Consultant**

ainee.khan@wolverhampton.gov.uk

- Infection Prevention
- Healthcare Public Health
- Adult Mental Health
- Adult Social Care Link
- CCG Link
- NHS Health Checks/ Cardiovascular Risk
- Lifestyle Change and Support



**Leonie Roberts**  
**Starting and Developing Well (Children and Young People) Consultant**

leonie.roberts@wolverhampton.gov.uk

- Infant Mortality
- Maternal Health and Wellbeing
- Healthy Child Programme
- Child Health and Early Years Development
- Oral Health
- Childhood Immunisations
- Healthy Weight (NCMP)
- Mental Health and Resilience of CYP
- PSHE lead in Education Settings
- Sexual Health across life course
- Drug and Alcohol across life course
- Licensing
- PH Commissioning Cycle support, including assessing needs, planning, prioritising and monitoring



**Lynsey Kelly**  
**Head of Communities**

lynsey.kelly@wolverhampton.gov.uk

- Community Safety Lead
- Safer Wolverhampton Partnership Board (Local Police and Crime Board)
- Anti-Social Behaviour Team
- Community Safety and Harm Reduction Strategy
- Preventing Gang Involvement and Youth Violence Strategy
- Programme Delivery and Service Commissioning
- Counter Terrorism / Channel Lead
- Modern Slavery Lead
- Community Cohesion Lead
- Violence Against Women and Girls
- VCS commissioning
- Place Based Approach
- Homelessness & Migration, and Migrant Health
- Teenage Pregnancy



**Richard Welch**  
**Head of Partnerships**

richard.welch@wolverhampton.gov.uk

- Leisure
- Libraries and Community Buildings
- Sport and Physical Activity Strategy
- Behavioural Science
- Life Expectancy - Working Age Adults



# City of Wolverhampton Council

## Children Services Leadership Team



**Alison Hinds**  
**Director of Children Services (DCS)**

alison.hinds@wolverhampton.gov.uk

- Adult Education and Duty Team
- Child Transformation Work
- Children & Young People in Care
- Children in Need & Child Protection
- Children's Commissioning
- Children's Partnership Boards
- Connexions Service
- Disabled Children & Young People
- Early Intervention
- Education Psychology
- Family for Children
- Family Hubs
- Financial Well Being
- Learning Communities
- Multi Agency Safeguarding Hub
- Post 16 Education
- Safeguarding
- School Improvement
- School Organisation and Admissions
- SEND & Inclusion Support
- Skills
- Specialist Support
- Wolves at Work; skills, jobs and careers
- Youth Justice Service
- Youth Offending



**Rachel King**  
**Deputy Director - Families First for Children Pathfinder**

rachel.king@wolverhampton.gov.uk

- Leading on the DFE Families First for Children Pathfinder
- Developing Family Help
- Decisive Multi-agency Child Protection System
- Unlocking the Potential of Family Networks



**Lisa Preston**  
**Deputy Director - Children's Social Care (Interim)**

lisa.preston@wolverhampton.gov.uk

- Children in Need & Child Protection
- Disabled Children & Young People
- Youth Offending
- Children & Young People in Care
- Early Intervention
- Specialist Support
- Regional Adoption Agency



**Brenda Wile**  
**Deputy Director - Education**

brenda.wile@wolverhampton.gov.uk

- Inclusion Support
- School Improvement
- Early Years
- Traded Services
- Post 16
- Alternative Provision
- Special Educational Needs and Disability
- School Organisation and Admissions
- Education Performance
- Skills
- Adult Education

Shared role across Adult and Children



**Vacant**  
**Deputy Director - Commissioning & Transformation**

- Principal Social Worker and Quality Assurance
- Commissioning
- Partnerships
- Co-production, Engagement and Participation
- Information, Advice and Support Services
- Children's and Adult Transformation Programmes
- Children's and Adult Improvement Work

Shared role across Adult and Children



**Jenny Rogers**  
**Head of Service for Families First for Children Pathfinder & Principal Social Worker**

jennifer.rogers@wolverhampton.gov.uk

- Advanced Practitioners
- Social Worker Recruitment and Retention
- Social Worker - Continuing Professional Development
- Quality Assurance incl Policies and Procedures

Role includes support to Children's Social Care Heads of Service and direct support to Director of Children Services



**Denise Williams**  
**Service Manager to Family Hubs**

denise.williams@wolverhampton.gov.uk

- Implementation of the City Wide Family Hub Model
- Partnership Engagement in the Family Hub Model
- Programme Coordinator for day to day operation of the 8 sites across the city

Role includes direct support to Director of Children Services



**Cherry Iacono**  
**Head of Strengthening Families**

cherry.iacono@wolverhampton.gov.uk

- Multi Agency
- Safeguarding Hub/ Emergency Duty Team
- Child Protection
- Court Team
- Family Help



**Jazmine Walker**  
**Head of Children and Young People in Care**

jazmine.walker@wolverhampton.gov.uk

- Children and Young People in Care
- Care Leavers
- Fostering
- Housing Support
- Disabled & Young People Teams
- Children's Homes



**Celia Payne**  
**Head of Specialist Support**

sonia.mahay@wolverhampton.gov.uk

- Children's Homes
- Intensive Family Support
- Family Group Conference
- Family Time
- Independent Visitor/ Mentors
- Youth Offending Team
- Power 2
- Missing Children
- Contextual Safeguarding and Exploitation
- Independent Reviewing Officers



**Simon Green**  
**Head of Adoption@Heart**

simon.green@adoptionatheart.org.uk

- Recruitment and Assessment of Adopters
- Family Finding
- Adoption Support



**Helen Bakewell**  
**Head of SEND and Inclusion**

helen.bakewell@wolverhampton.gov.uk

- Special Educational Needs and Disability Early Identification and Support
- Special Educational Needs and Disability Assessment & Planning
- Vulnerable Learners
- Educational Welfare and Inclusion
- Virtual School
- Educational Psychology
- Specialist Commissioning



**Phil Leivers**  
**Head of Education Excellence**

phil.leivers@wolverhampton.gov.uk

- Citizenship Literacy and Learning
- Continuing Professional Development for Schools
- Early Years
- Research and Assessment
- Safeguarding in Education
- School Governance
- School Improvement
- Standing Advisory Council on Religious Education



**Bill Hague**  
**Head of School Business and Support Services**

bill.hague@wolverhampton.gov.uk

- Education Statutory and Traded Services
- School Organisation
- School Admissions
- Education Information and Communications Technology services
- Private Finance Initiative Contracts Management



**Julie Obada**  
**Head of Skills**

julie.obada@wolverhampton.gov.uk

- Skills and Employability Strategy
- Connexions Service
- Black Country Impact
- Wolves at Work; skills, jobs and careers
- Youth Taskforce



**Anna Place**  
**Head of Adult Education**

anna.place@wolverhampton.gov.uk

- Adult Education for the City
- Integration of Adult Education Wolverhampton (AEW) for City Learning Quarter (CLQ)
- West Midlands Adult and Community Learning Alliance (ACLA)



Rachel Brothwood  
**Executive Director of Pensions**

rachel.brothwood@wolverhampton.gov.uk

- WMPF Corporate Plan
- Corporate Responsibility and Pension Fund Governance
- Stakeholder and Industry Engagement
- Fund Culture and People Strategy
- Financial and Risk Strategy



Shiventa Sivanesan  
**Assistant Director  
(Investment  
Management and  
Stewardship)**

shiventa.sivanesan@  
wolverhampton.gov.uk

- Responsible Investment
- Climate Change Framework and Strategy, Climate Risk Reporting
- Development and Oversight of Management Arrangements
- Stewardship, Reporting and Disclosure
- Collaborative Engagement Initiatives



Paul Nevin  
**Assistant Director  
(Investment  
Strategy)**

paul.nevin@  
wolverhampton.gov.uk

- Investment Strategy Development and Implementation
- Strategic Asset Allocation
- Development and Oversight of Management Arrangements
- Portfolio Analysis and Reporting
- Investment Operations and Processing



Chris Manning  
**Head of Finance  
(Deputy Section  
151 Officer)**

christopher.manning@  
wolverhampton.gov.uk

- Pensions Fund Accounts
- Financial Reporting
- Fund Accounting
- Budget Management
- Treasury Management



Simon Taylor  
**Assistant Director  
(Pensions)**

simon.taylor2@  
wolverhampton.gov.uk

- Funding Strategy, Employer Covenant and Risk
- Employer Services including Admissions and Exit Planning
- Pensions Administration Strategy
- Member Information and Events
- Customer Engagement and Customer Services



Amy Regler  
**Head of  
Operations**

amy.regler@  
wolverhampton.gov.uk

- Fund IT/Systems Support
- LGPS Technical Support
- System Developments
- Benefit Processing and Determinations
- LGPS Pension Payroll



Rachel Howe  
**Head of  
Governance,  
Risk and Assurance**

rachel.howe@  
wolverhampton.gov.uk

- Fund Governing Bodies
- Legal, Risk & Compliance
- Regulatory Change and Statutory Reporting
- Business Continuity
- Information Governance and Data Management



Vacant  
**Head of People  
and Corporate  
Services**

- Recruitment & Resourcing
- People & Organisational Development
- Wellbeing & Inclusion
- Corporate Communications and Graphic Design
- Facilities Management